



INSTRUCTIONS FOR INSTALLING POCKET DOOR FRAME

200 lb. Ball Bearing

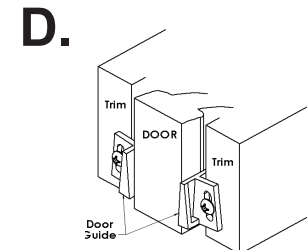
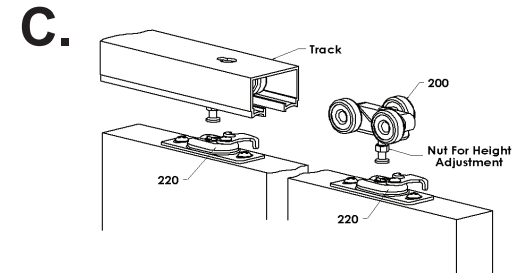
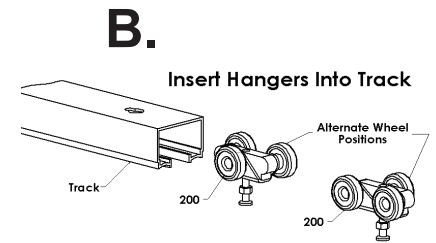
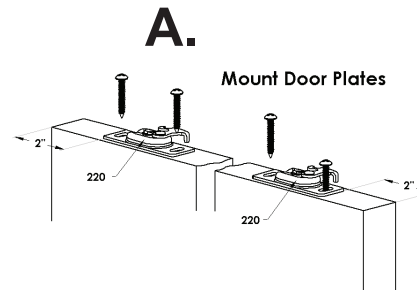
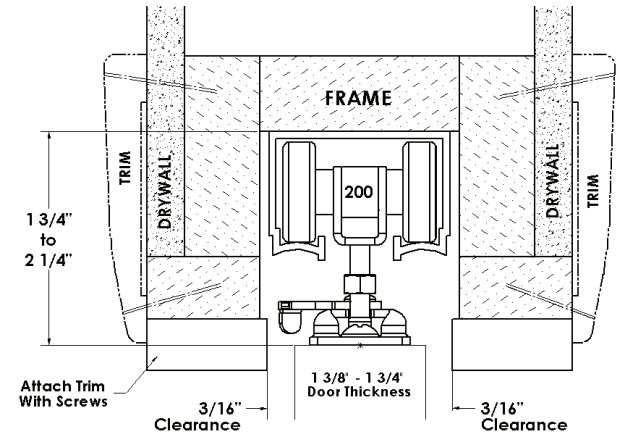
Dimensions of Rough Openings for Pocket Door Frames

Finish Door Size	2' 0"	2' 4"	2' 6"	2' 8"	3' 0"
Rough opening height from sub-floor for 6' 8" door.	84 1/2"	84 1/2"	84 1/2"	84 1/2"	84 1/2"
Rough opening height from sub-floor for 7' 0" door. (For 8' 0" add 12")	88 1/2"	88 1/2"	88 1/2"	88 1/2"	88 1/2"
Opening width for one door	4' 2"	4' 10"	5' 2"	5' 6"	6' 2"
Opening width for two doors	98 1/4"	114 1/4"	122 1/4"	130 1/4"	146 1/4"

- Place header on top of frame and insert metal stiffeners of the frame into the slots in the header. Backboard of frame inserts flush with end of header. Fasten with nails or screws (not provided).
- Stand complete frame into opening, plumb and anchor to sub-floor.
- Shim, level, and secure header to framed opening with screws (not provided).
NOTE: If installing 8/0 tall frame or solid core doors, replace the front, middle, and rear screws in the track with the provided (8/0 units only) 2 1/2" screws and secure into the header beam.
- Rubber bumper has been installed on backboard so that door will extend past jambs in order to be flush with trim when applied.
- Install door guides.
- Remove all shipping blocks.
- Attach hardware per instructions on hardware bag.

NOTE: If necessary to have more rigidity when nailing wall materials, insert a block between the metal stiffeners and withdraw the block before installing the door.

CAUTION: Use proper length nails or screws on wall materials to avoid damaging the door in the pocket.



Note: Track must be level and square with jamb. Door must be sealed on all 6 sides.

A/Attach door plates on top of the door 2" from each edge with lock tabs on same side.

B/Insert Hanger into track alternating wheel positions for even weight distribution.

C/Mount Door by locating door plate under adjusting bolt of hanger and tilting door until bolt will slide into seat of door plate. Repeat with other hanger/door plate. Adjust hangers for height and plumb with jamb.

D/Attach guides at bottom of opening and adjust so door is centered in opening.